

## fleet camera systems

4-Channel M-DVR available as a 2,3 or 4-cam system with IP channel for optional camera or DSM camera

# PULS-CAM

EYES ON YOUR ASSETS

[www.pulsit.co.za](http://www.pulsit.co.za)

Increase vehicle efficiencies • stop fuel theft • stop vehicle abuse • increase security • prevent accidents

### D I D Y O U K N O W ?

- Human error contributes to 93% of all road accidents
- According to Georgia Tech 80% of all accidents are caused by driver distraction occurred 3 seconds prior to an accident
- French Insurance Company AXA's research suggests 1.5 seconds advance warning can prevent **90%** of rear end accidents and 2 seconds advance warning can prevent most accidents from happening

Available with DSM (Driver Status Monitor) & ADAS (Advanced Driver Assistance System)\*

- Driver Fatigue Warning (DSM)
- Driver Distraction Alert (DSM)
- Lane Departure Warning (ADAS)
- Collision Warning (ADAS)

\* Add-on option to our standard 2-cam or 4-cam DVR camera kit terms apply – please enquire for full details

Increase vehicle efficiencies • stop fuel theft • stop vehicle abuse • increase security • prevent accidents



**M-DVR + 1TB Hard Drive**

- Live Streaming
- Event Recording
- Camera Tamper/Cover Alert

HD Wide Angle Cab View Camera Infra-Red  
HD Road Facing Camera

IP66 Infra-Red HD Side View  
Cameras



**Camera Configurations:**

1. 4-Camera option (Standard)
2. 2-Camera option
3. 4-Cam + DSM or ADAS Camera (Optional)
4. 2-Cam + DSM and/or ADAS (Optional)



live streaming • onboard recording • over the air download • high definition • infra red • map view

web and mobile (iOS and Android) VMS (video management software) / applications with real-time streaming, history playback and footage download

(Driver Status Monitor) & ADAS (Advanced Driver Assistance System)\*

With **PULS-CAM** video tracking and evidence vault software, you can monitor your fleet's location, live stream video and view video alarms send to the servers automatically.

The **PULS-CAM** solution supports a wide variety of accelerometer generated events for corrective training and I/O's that can trigger a video alarm. Apart from alarm video events, video will be continues recorded on the MDVR that can be remotely viewed or downloaded if more information is needed.

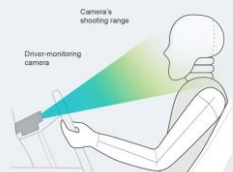


**Standard 4 Camera Kit includes:**

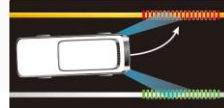
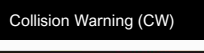
- 4 Channel 1080P full function HDD AHD M-DVR + IP Port
- G-sensor for driver behaviour monitoring
- 1TB HDD (Hard Disk Drive)
- 2 x External IP66 HD Infra Red Cameras
- 1 x In-cab view HD Infra-Red wide-angle camera
- 1 x In-cab Road facing HD Camera



Driver Fatigue Detection (DFD)



Driver Distraction Alert (DDA)



Lane Departure Warning (LDW)

Technologies in advanced driver-assistance systems (ADAS) are helping to keep our roads safer, save lives, protect company reputation and prevent loss of income.

\* available as an add-on option to our standard 2-cam or 4-cam DVR camera kit. Terms apply – please enquire for full details

